

Monthly Unemployment Update – December 2011

This note relates to the unemployment data for December 2011 released on the 18th of January 2012.

There are now 13,598 people in Nottingham City claiming Job Seeker's Allowance and 21,108 people in Greater Nottingham. Unemployment rates now stand at 6.1% in the City and 4.6% in Greater Nottingham. Unemployment was virtually unchanged in the last month in the City and saw a small increase, in line with the national average, in Greater Nottingham.

Table 1: Unemployment and change, December 2011

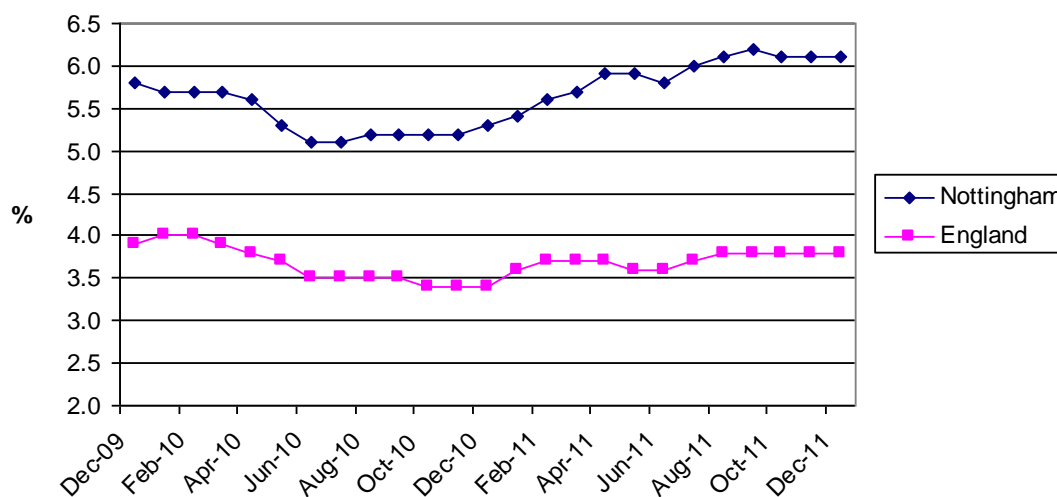
Area	December 2011		Change in last month		Change in last year	
	Number	rate	Number	%	Number	%
Nottingham City	13,598	6.1	-8	-0.1	1,945	16.7
Greater Nottingham	21,108	4.6	125	0.6	2,999	16.6
Notts (exc City)	16,841	3.4	370	2.2	2,338	16.1
East Midlands	105,864	3.7	1,118	1.1	11,745	12.5
England	1,293,890	3.8	8,745	0.7	131,961	11.4

Source: ONS claimant count December 2011 (from Nomis)

Annual change figures show Nottingham as having a higher rate of increase than the regional and national averages. Nottingham saw increases in unemployment in the first six months of the period at double the national rate of increase. This is likely to be due in part to the Future Jobs Fund, which funded placements for young unemployed people, coming to an end but also is related to job losses in older age groups. However, since June 2011, the rate of increase in Nottingham has been slightly slower than nationally. In the last three months, there has been a small fall in unemployment both locally and nationally.

Chart 1 shows how the City and national unemployment rates have changed over the last two years. The longer time period covers both the start and end of the Future Jobs Fund so the scheme doesn't skew the figures. The graph shows that Nottingham saw an increase in unemployment over the period while there was a fall nationally. Some of this difference can be explained by changes in the benefits system, but analysis of all out of work benefits shows that Nottingham saw a genuine increase in unemployment due to job losses between November 2010 and May 2011.

Chart 1: Nottingham and England JSA claimant rates (Dec 2009- Dec 2011)



Seasonally adjusted figures for England and the East Midlands show that the small increase in unemployment seen in the last month would generally be expected at this time of year. This suggests that the small amount of change in Nottingham is in line with expectations and that there hasn't been any change in unemployment above what would be expected due to normal seasonal trends.

Within the East Midlands, Nottingham and Leicestershire were the only two areas to see a fall in unemployment in the last month. Most areas saw a small increase with the largest being in Lincolnshire and Nottinghamshire (2.9% and 2.2% respectively). The annual change figures show Nottingham as having the second largest increase behind Derby City. As previously stated, Nottingham's figures are skewed by large increases in the first six months of the year. The figures for the six months from June to December 2011 show a 5.2% increase in the City which is lower than Nottinghamshire, Derby City and Lincolnshire. Over the last six months, Northamptonshire, Rutland and Leicester City have all seen falls in unemployment.

Nottingham and Manchester were the only two core cities to see a fall in unemployment in the last month. The largest increase was in Newcastle where unemployment increased by 2.5%. The annual change figures show that Bristol has seen the largest increase in unemployment with Nottingham having the equal third highest along with Newcastle and behind Sheffield. Liverpool and Leeds have seen the smallest increases in unemployment. Again, the difference between the figures for the first six months of the period and the last six months is stark, and only Liverpool has seen a smaller increase in unemployment than Nottingham since June 2011.

Age and Gender

The small fall in unemployment was made up of an increase in male unemployment and a larger fall in female unemployment. The number of people transferring to JSA from Income Support for Lone Parents has stabilised in the last three months as no further changes have been made to the benefit. In previous years, this has had a significant impact on female unemployment and has made changes in female unemployment difficult to analyse. As a result of the lack of people transferring, female unemployment has stabilised over the last three months. However, more changes are expected in early 2012 which may cause more claimants, predominantly women, to transfer to JSA.

Over the last year, unemployment has increased in all age groups. The largest numerical increase has been in the 24 and under group which increased by 690 people although the 50 and over age group saw a higher percentage increase. The fall in unemployment over the last three months is largely due to falls in unemployment amongst the under 25 age group. As stated in the last unemployment update, although youth unemployment is a major issue both locally and nationally, the main age groups where Nottingham has differed from the other Core Cities has been in the 45-55 age group and the 25-29 group. This is particularly the case in comparison to Leeds and Liverpool which have seen lower increases in unemployment. This suggests that these cities have been more successful in preserving jobs or finding alternative employment for more experienced job seekers.

Ward unemployment

Table 2 shows monthly falls in unemployment in nine wards with no change in a further three. The largest fall was of 22 people in Sherwood and the largest increase of 19 people in Arboretum ward. The annual change figures show large increases in every ward with 11 increasing by more than 100 people and only one increasing by

less than 10%. The falls in unemployment over the last three months have been spread across the wards, with 13 showing a fall over the period.

Table 2: Unemployment in City wards, December 2011

Area	December 2011			Change in last month		Change in last year	
	Number	Rate	City Rank	Number	%	Number	%
Arboretum	796	6.7	=7	19	2.4	156	24.4
Aspley	1,188	10.5	1	1	0.1	143	13.7
Basford	705	6.3	11	13	1.9	112	18.9
Berridge	947	6.5	=9	-16	-1.7	130	15.9
Bestwood	1,004	8.9	3	14	1.4	175	21.1
Bilborough	789	7.5	5	14	1.8	118	17.6
Bridge	704	6.7	=7	-16	-2.2	110	18.5
Bulwell	1,027	9.4	2	0	0.0	133	14.9
Bulwell Forest	457	5.0	14	2	0.4	68	17.5
Clifton North	392	4.4	16	-9	-2.2	49	14.3
Clifton South	522	6.0	12	9	1.8	55	11.8
Dales	835	7.2	6	-6	-0.7	143	20.7
Dunkirk and Lenton	273	2.5	=18	0	0.0	29	11.9
Leen Valley	344	4.9	15	-2	-0.6	56	19.4
Mapperley	719	6.5	=9	13	1.8	104	16.9
Radford and Park	751	4.0	17	-16	-2.1	50	7.1
Sherwood	588	5.5	13	-22	-3.6	79	15.5
St Ann's	1,186	8.6	4	-1	-0.1	174	17.2
Wollaton East and Lenton Abbey	138	1.4	20	0	0.0	21	17.9
Wollaton West	233	2.5	=18	-5	-2.1	40	20.7

Source: ONS claimant count December 2011 (from Nomis)

Report produced by: Geoff Oxendale, Information and Research Officer, Nottingham City Council. Tel: 0115 8763978.